

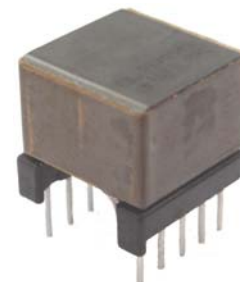


MODEM TRANSFORMER PT79546

Qualified to Teridian 73M2901CE low speed modem and the
73M1903 modem AFE in high and low speed applications chip sets.

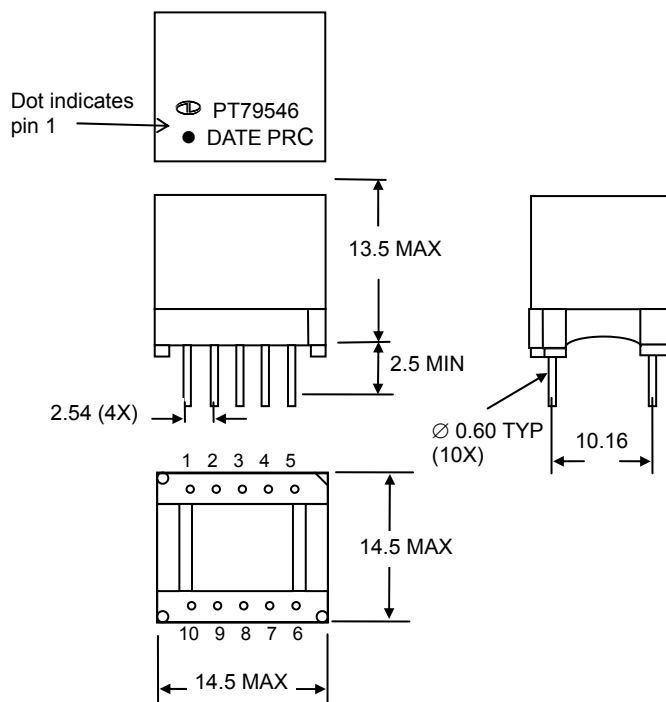
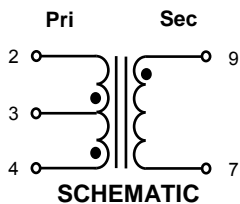
Electrical Specifications @ 25°C

Impedance, Primary	600Ω Typ. @ 1kHz 1Vrms*
Total Harmonic Distortion	-82 dB Max. @ 600Hz -10dBm*
Insertion loss	1.90 dB Max. @ 1kHz, 0dBm*
Frequency response	±0.15 dB @ 200-4000 Hz 0dBm* (relative to 1kHz)
Return loss	20 dB Min. @ 200Hz Per 600 Ohm Match.
Return loss	20 dB Min. @ 200Hz Per Pan-Euro CTR21 Match
D.C. resistance @20°C	Primary = 82Ω Typ. Secondary = 106Ω Typ.
Turns Ratio (4-3-2) : (9-7)	1CT : 1 ±2%
Dielectric strength Pri.to Sec.	1500Vrms 1 min. (Production test 2000Vrms 2s minimum)
D.C. Current in Primary	0mA
Operating Temperature	-40 to +105 °C
Storage Temperature	-40 to +125 °C
Shunt Inductance Lp, Primary	4H Typ. @1kHz 1Vrms.
Shunt Loss Rp, Primary	1.5MΩ Typ. @ 1kHz 1Vrms.
Leakage Inductance	4.5mH Typ. @ 1kHz 1Vrms.



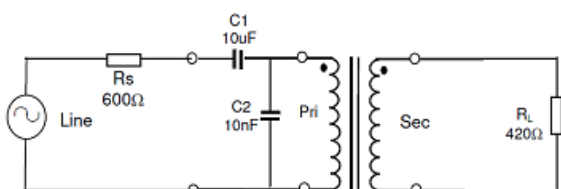
(* = test with 420Ω load at Secondary)

Mechanical Outline and Schematic



All dimensions in millimeters
Unless otherwise specified, tolerance ±0.25mm

600 Ohm Match



Pan-Euro CTR21 Match

